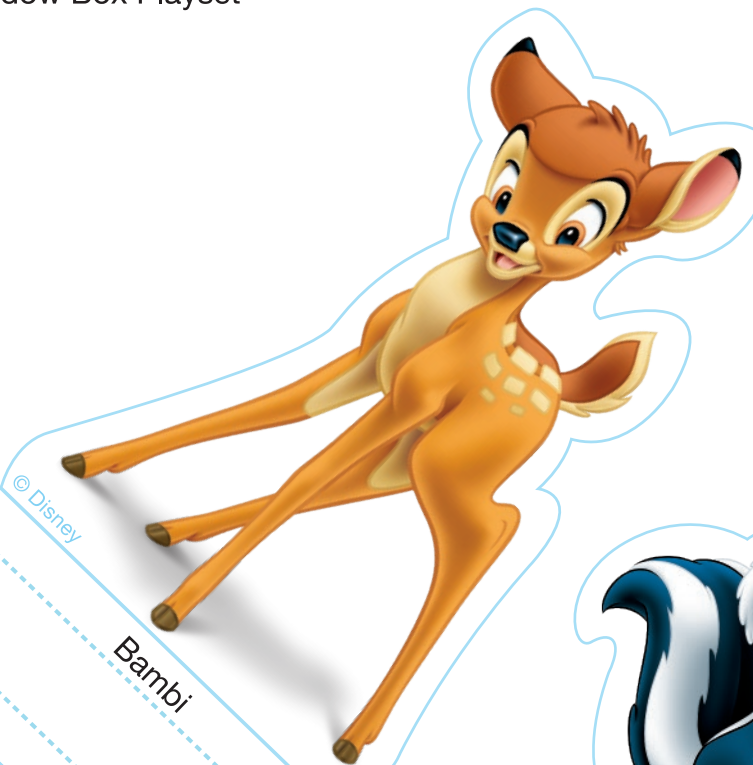
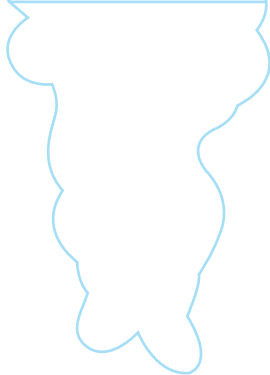
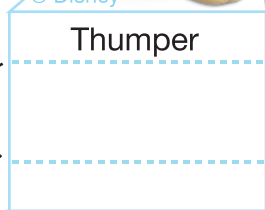




© Disney

Thumper

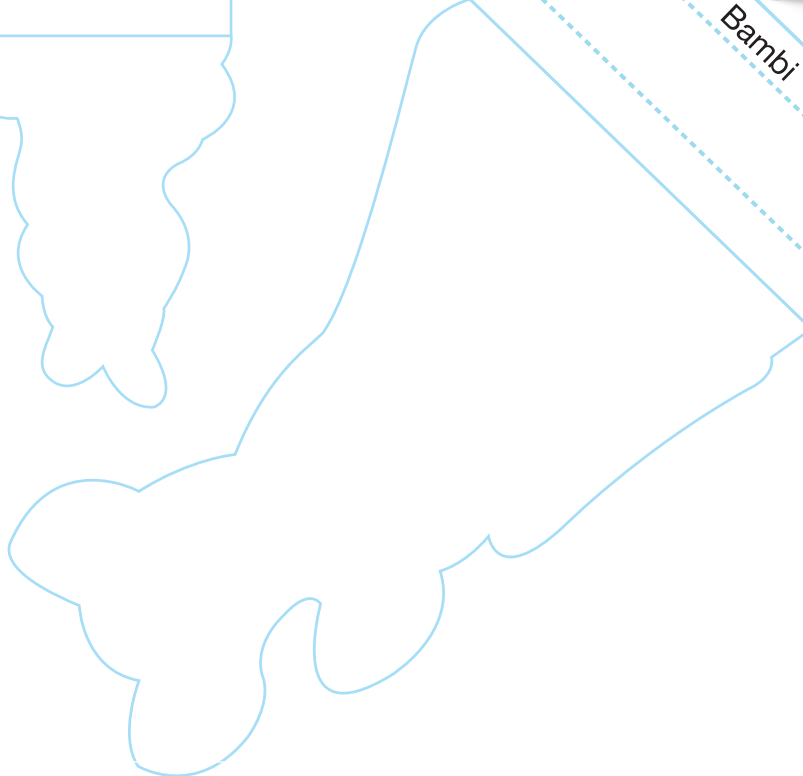
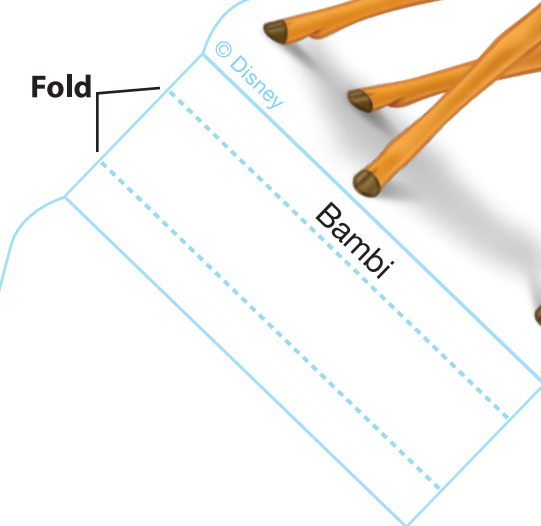
Fold



© Disney

Bambi

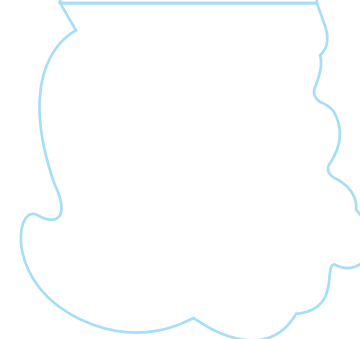
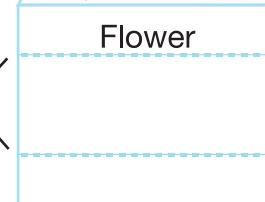
Fold



© Disney

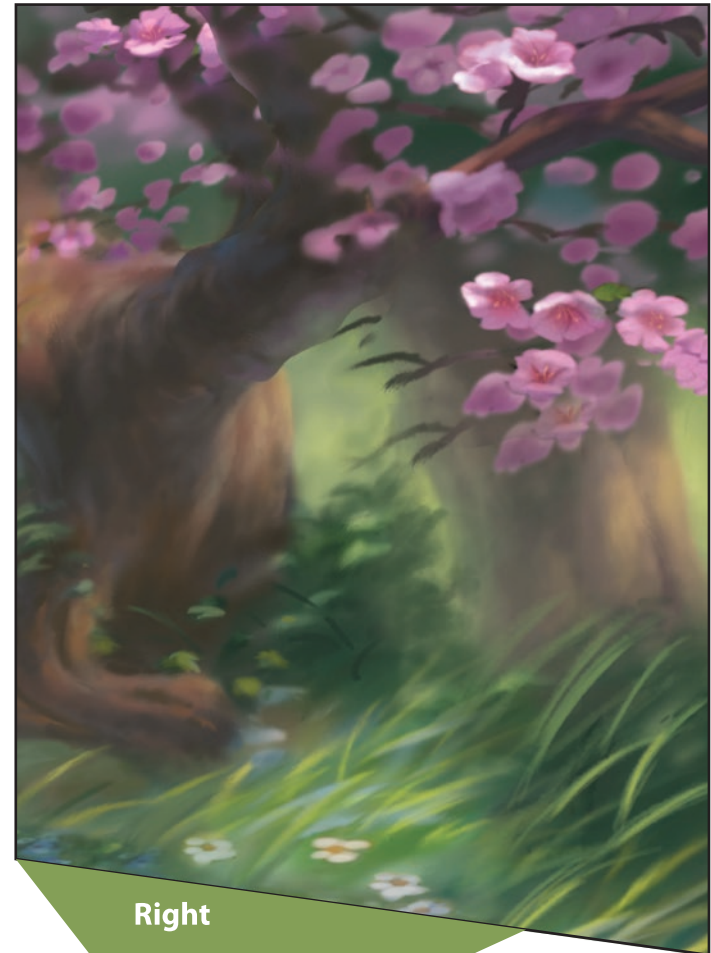
Flower

Fold

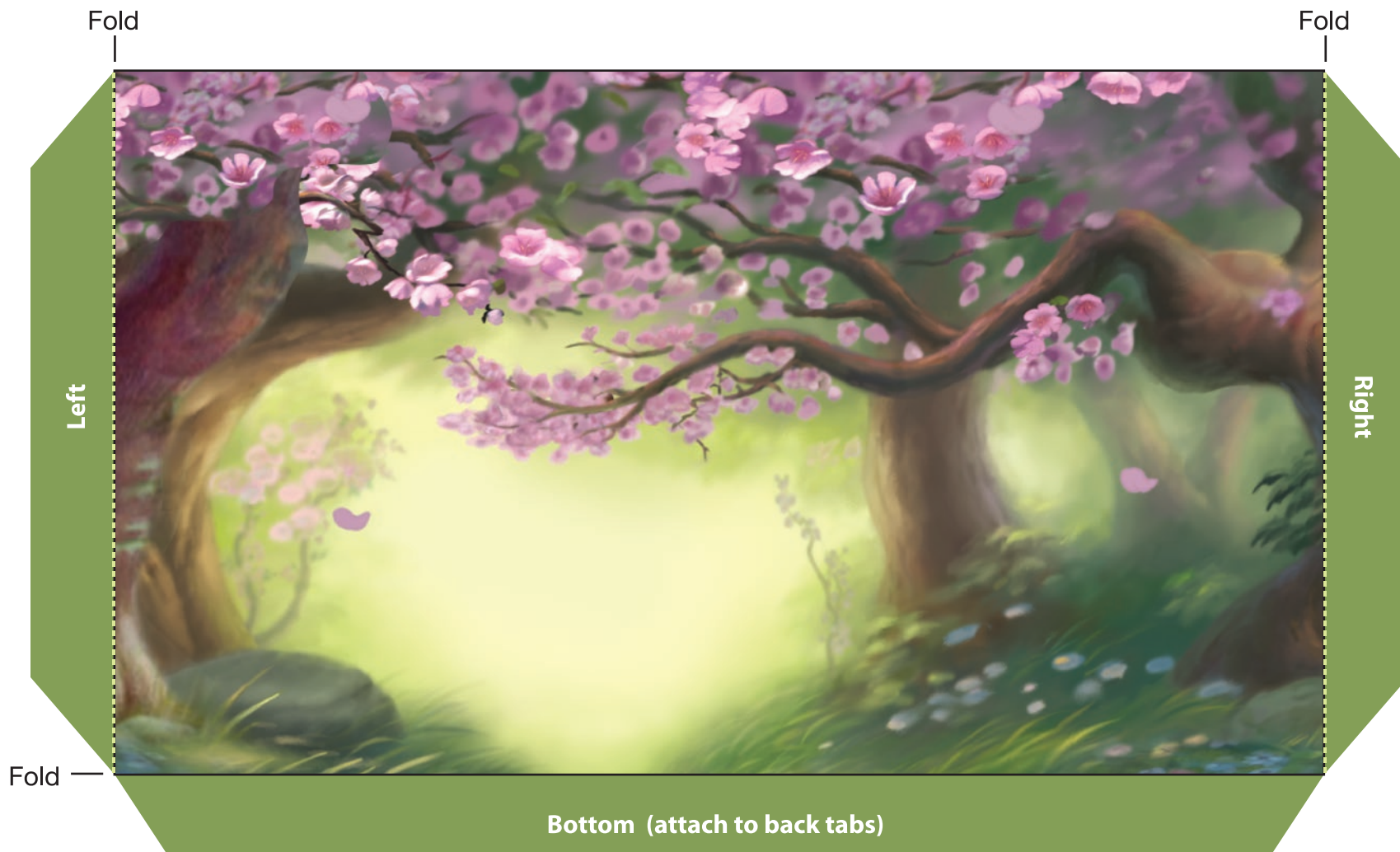




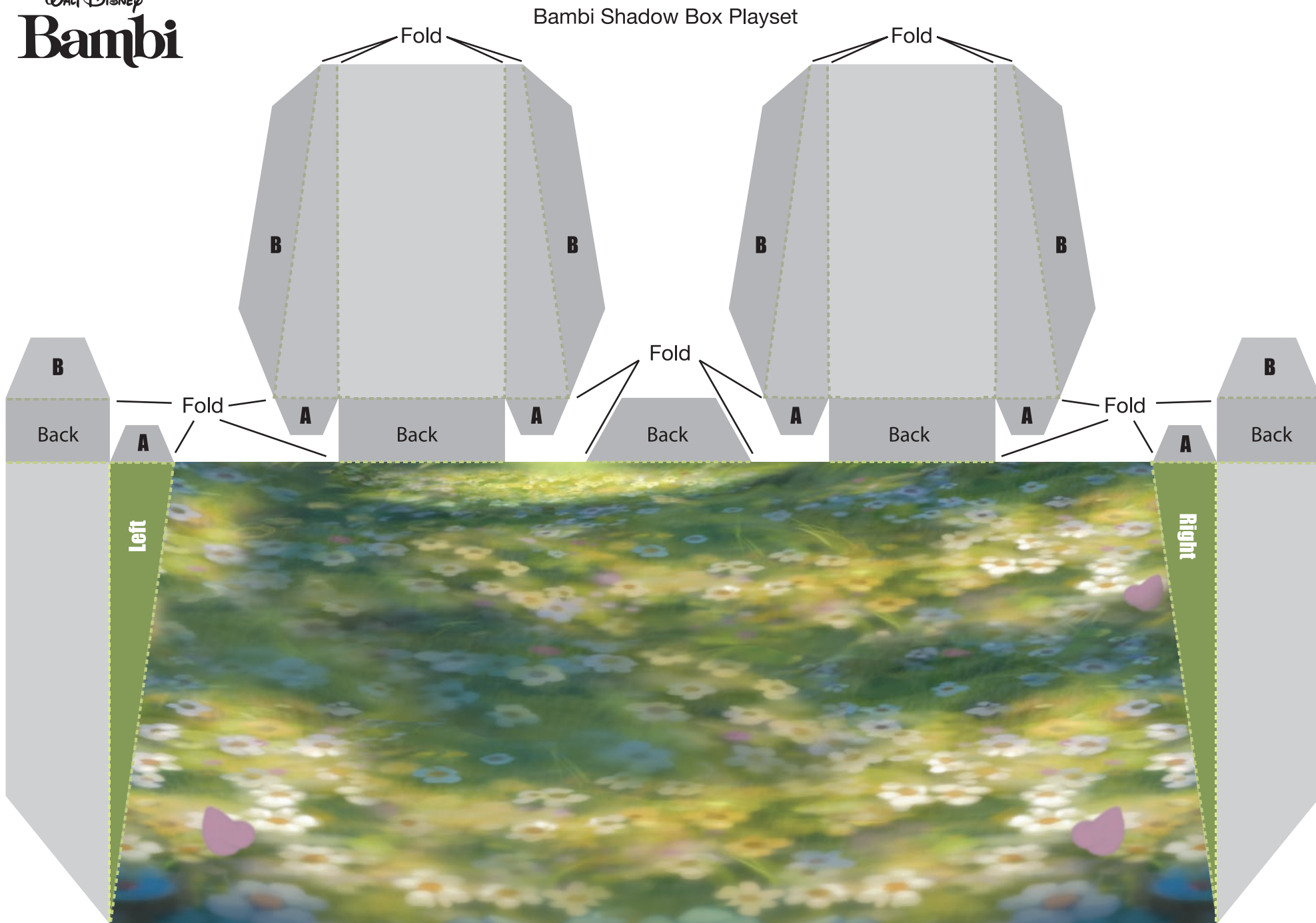
Left



Right



Bambi Shadow Box Playset



## Bambi Shadow Box Playset

1. Print the pages on regular paper or cardstock and cut out all the pieces. Do not cut along the dashed lines – this is where you will fold the paper.
2. Starting with the characters, fold the dashed lines away from you. Fold the solid lines at the bottom of the character and the character outline toward you. When all folds have been made, secure the front and back of the character together using glue or double-sided tape. You should find that you've created a stand for the character. Repeat this step with the remaining characters.
3. Next, make all folds along dashed lines on the background bottom piece. Secure all A tabs to their corresponding pieces, then secure all B tabs to the bottom of the piece.
4. Secure the back background piece to the bottom background piece by attaching the large bottom tab to all tabs labeled "BACK."
5. Secure the background sides to the bottom background piece by attaching the corresponding tabs.
6. Finally, secure the back background tabs labeled "LEFT" and "RIGHT" to their corresponding sides.