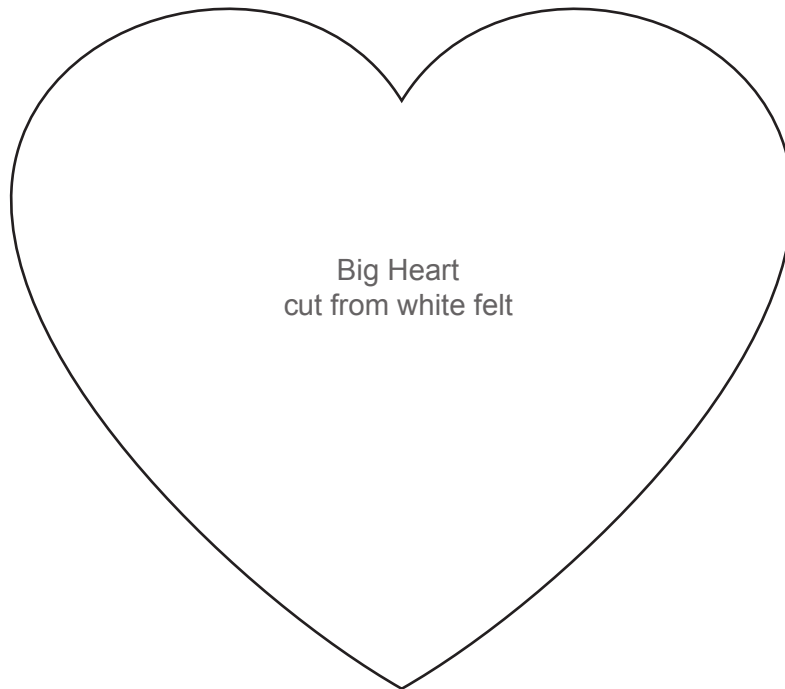


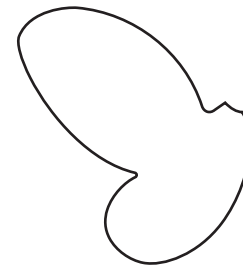
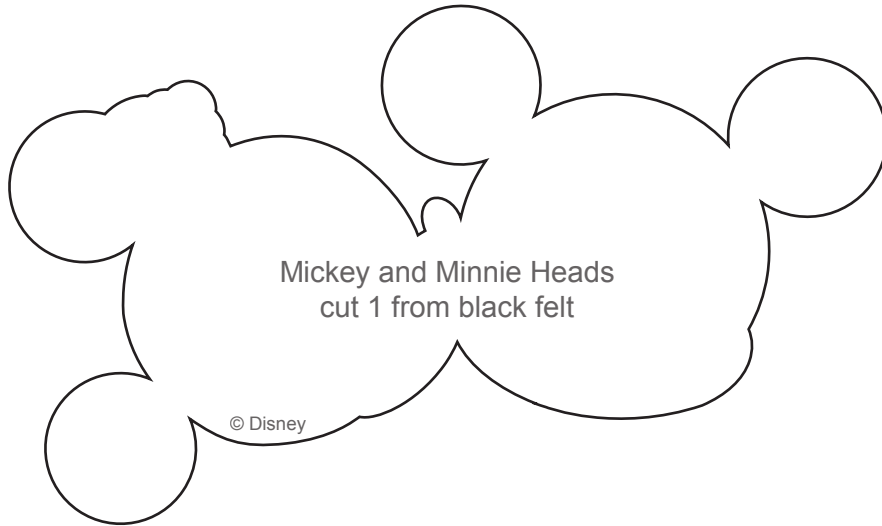
Cut 2 Sleeves
from dark pink felt



Big Heart
cut from white felt



Small Heart
cut from pink felt



Minnie's Hat
cut 1 from pink felt



Minnie's Eye
cut 1 from black felt



Mickey's Nose
cut 1 from black felt



Hat Flower
cut 1 from yellow felt



Heart
cut 1 from red felt



Mickey's Eyes
cut 2 from black felt



Flower Center
cut 1 from orange felt

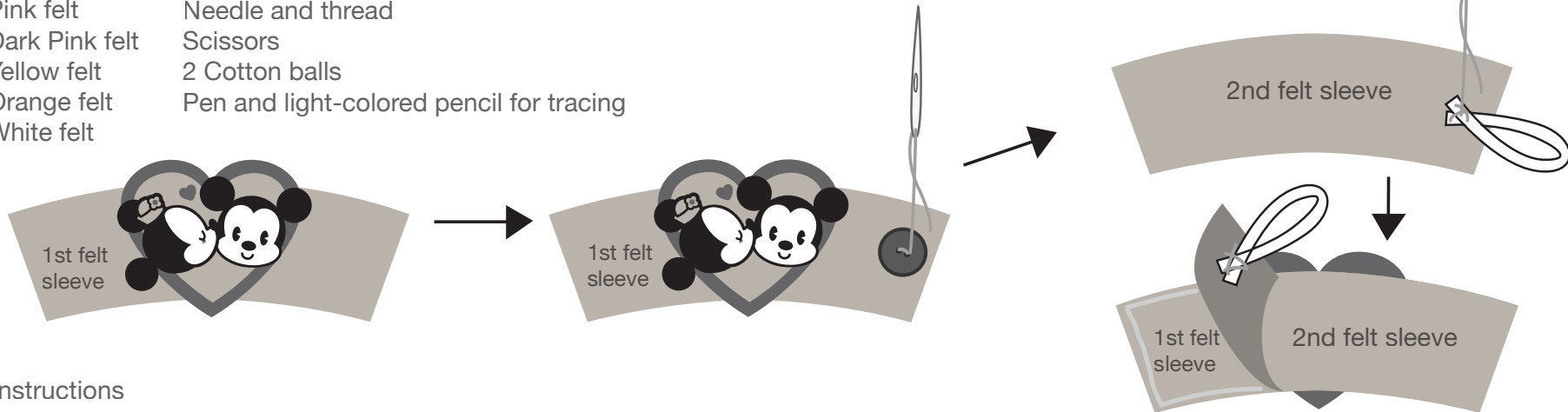


Mickey's Smile
cut 1 from black felt

Mickey and Minnie Cutie Felt Drink Sleeve

You'll need:

Black felt	Hot glue (only adults should use hot glue)
Red felt	Elastic cord
White felt	Big button (any color)
Pink felt	Needle and thread
Dark Pink felt	Scissors
Yellow felt	2 Cotton balls
Orange felt	Pen and light-colored pencil for tracing
White felt	



Instructions

1. Print the template pieces and cut them out.
2. Trace the templates onto the designated color felt and cut out the pieces.
3. Glue the pink heart to the middle of the white heart.
4. Glue Minnie and Mickey's heads together in order:
 - Glue the faces to the heads
 - Glue Minnie's eye to her face
 - Glue Mickey's eyes, nose, and mouth to his face
 - Glue Minnie's hat to her head
 - Glue the flower to Minnie's head
 - Glue Mickey and Minnie's heads to the hearts
 - Glue the little red heart above Mickey and Minnie's heads
5. Cut a length of elastic cord about 4 inches long. Form a loop with the elastic and sew the ends to the back side of the 2nd felt sleeve, on the right end.
6. Sew a button on top of the 1st felt sleeve on the front-right end.
7. Unravel two cotton balls and lay them on top of the 2nd sleeve with the elastic cord.
8. Glue or stitch the 1st sleeve on top of the 2nd sleeve. The sewed elastic ends should be sandwiched between the two pieces.
9. Glue the white heart to the front of the sleeve.

